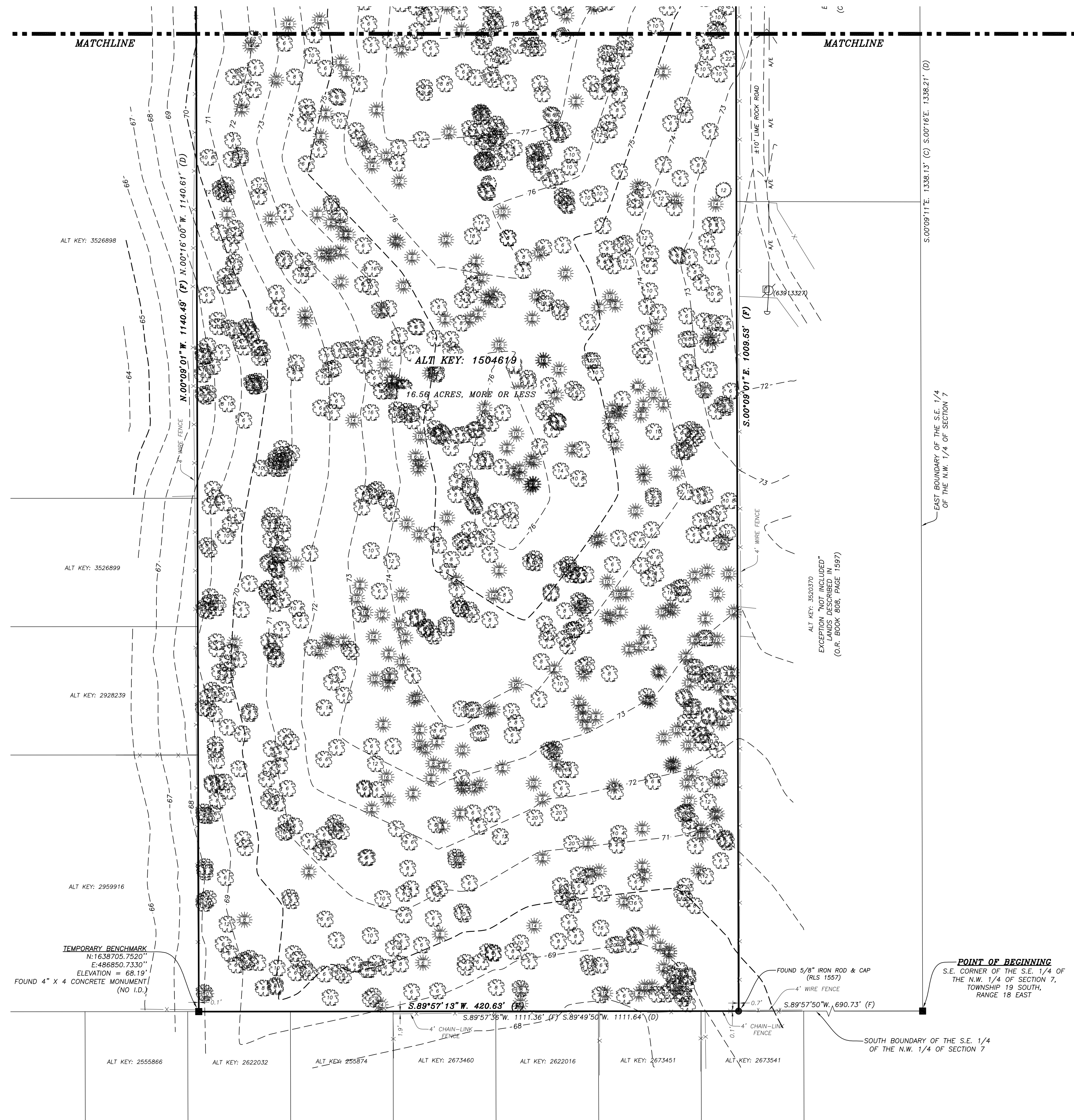
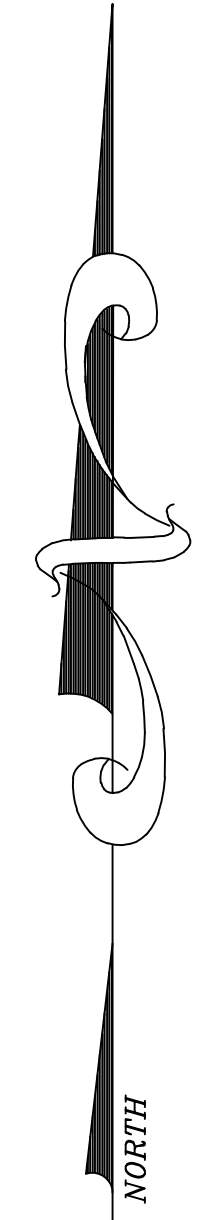
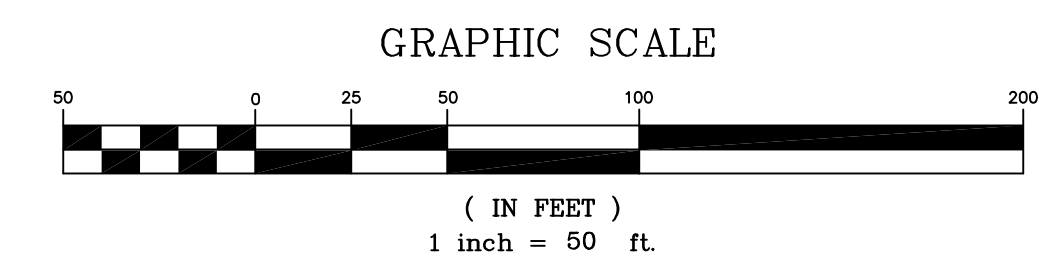


SECTION 7, TOWNSHIP 19 SOUTH, RANGE 18 EAST
CITRUS COUNTY, FLORIDA



- LEGEND** UNLESS OTHERWISE NOTED
- ⊕ = CENTERLINE OF RIGHT OF WAY
 - C.B. = CHORD BEARING
 - O.R. = OFFICIAL RECORDS OF MARION COUNTY
 - ⊙ = BENCHMARK/CONTROL POINT
 - ⦿ = FOUND 5/8" IRON ROD & CAP - PLS 2797
 - ⦿ = SET 5/8" IRON ROD & CAP - LB 5091
 - ⦿ = FOUND 4" x 4" CONCRETE MONUMENT - NO I.D.
 - ⦿ = FOUND NAIL & DISC
 - (F) = FIELD MEASUREMENT
 - (P) = PLAT DIMENSION
 - (D) = DEED DIMENSION
 - (C) = CALCULATED DIMENSION
 - ⊕ = WOOD POWER POLE
 - ⊕ = GUY ANCHOR
 - ⊕ = TELEPHONE VAULT
 - ⊕ = TELEPHONE BOX
 - ⊕ = FIRE HYDRANT
 - ⊕ = WATER METER
 - ⊕ = MAILBOX
 - ⊕ = SIGN
 - A/E— = AERIAL ELECTRIC
 - X— = BROKEN LINE; NOT DRAWN TO SCALE
 - D— = DENOTES CONCRETE
 - A— = DENOTES ASPHALT

- TREE LEGEND**
(SIZE DENOTED INSIDE SYMBOL)
- CEDAR
 - CHERRY
 - ELM
 - OAK
 - PALM
 - PINE



SHEET 2 OF 2
ONE IS NOT COMPLETE WITHOUT THE OTHER
SEE SHEET 1 OF 2 FOR DESCRIPTION, NOTES,
SURVEYOR'S CERTIFICATION.

NO.	REVISIONS	BY	DATE

DRAWN:	S.W.M.
REVISED:	
CHECKED:	T.P.B.
APPROVED:	T.P.B.
SCALE:	1" = 50'

**BOUNDARY & TOPOGRAPHIC
SURVEY FOR:
FREEDOM CAPITAL, LLC**

REFERENCES:
F.B., PGS.
FILE: S7-T19-R18

J.O.# 24053
DWG.# 24053
SHT 2 OF 2